

Dependency of Human on Computers through Artificial Intelligence¹Pradeep Jha, ²Radha Saini, ³Mohit Pareek, ⁴Parmila Kumari

Assistant Professor, Department of CSE, Arya College of Engineering & Research Centre, Jaipur

Abstract

In today's scenario, there is a very important relationship between computer and human. Artificial Intelligence is helping a lot in today's world to create interaction between humans and machines. There are advantages as well as disadvantages of these interactions. Artificial Intelligence (AI) and Human computer Interactions (HCI) have had some similarities historically. Code-driven systems have spread across the world in a very large proportion. Digital life is becoming a very important part of human life.

Keywords: AI, Human Interactions, ANI, AGI, ASI.**Introduction**

The increasing availability of huge amounts of data, the increasing power of computing, and therefore the evolution of learning algorithms have junction rectifier to important enhancement in several computing capabilities, together with computer vision, speech recognition, and natural language processing. These capabilities, like others, are commonly known as artificial intelligence (AI) because they enable information technology to perform tasks that require information [1]. IT vendors have used artificial intelligence capabilities to improve the performance of existing systems (for example, decision support systems) and to develop new applications (such as voice assistants) [7].

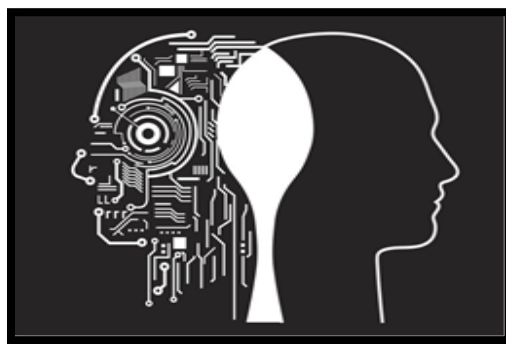


Fig 1: Artificial Intelligence

Another name of Artificial intelligence is machine learning. It contains programming computers for options like speech recognition, learning, planning, drawback finding, knowledge, reasoning, perception, ability to maneuver objects etc. It is like a threat to employment in future. Artificial intelligence helps the computer to behave like humans. As per as the types of artificial intelligence is concerned, there are three types:

- Artificial Narrow Intelligence (ANI)
- Artificial General Intelligence (AGI)
- Artificial Super Intelligence (ASI)

In AI, there's an outsized quantity of knowledge that contains quick and unvaried process and intelligent algorithms that enable the program to mechanically learn from the information options. An organized Way to utilize the derived knowledge so that it can be easily modified which helps in error correction or useful in various circumstances. Java, python, Lisp, Prolong and C++ are the main Artificial intelligence programming languages which makes it is able to meet different wants within the development and style of various programs. the foremost common AI programs embrace Cloud Machine Learning Engine, Azure Machine Learning Studio, IBM SPSS, Tensor Flow, and IBM Watson.

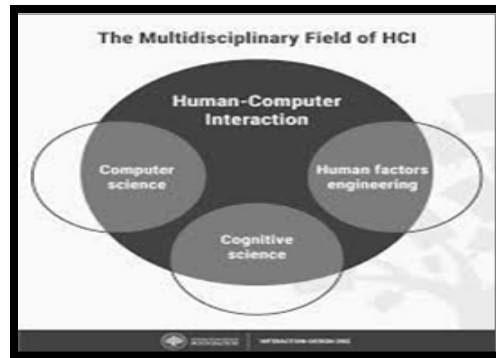


Fig 2: Human Computer Interaction

Importance

- Artificial intelligence is not same as hardware-driven, robotic automation. Without any fatigue, it performs frequent, high volume, computerized tasks.
- In many cases, artificial intelligence adds products. Just like adding Siri to the new generation of Apple product, the product you already use are increased by the factitious intelligence feature. several security data is remodeled into investment analysis by combining automation, discussion platforms, robots and sensible devices with an outsized quantity of information to reinforce and modify several technologies within the workplace or reception..[8]
- Data do programming through progressive.
- Computing has several hidden layers, permitting deeper knowledge analysis exploitation neural networks.[2] Taking associate degree example, a number of years agony it had been not possible to determine a five-tier hidden fraud detection system..
- Intelligence to existinglearning algorithms whichis adapted by ArtificialIntelligence. This resultsin becoming thealgorithm a classifier or predictor. Just like an algorithm can teach itself the process of how to play chess, it also learns itself which product is going to be recommended next. Artificial intelligence also includes a technique which is known as Back propagation.This has been achieved by marvelous computer power and big data. As much data you give to the learning models, they become more accurate because they directly teach themselves through data.
- On the whole, it totally depends on data. If the data is better, it will competitive advantage. We have to just apply Artificial Intelligence to get the answers from data.



Fig 3: Human-AI Interaction design

Examples

- SIRI: It is the personal assistant which is very popular in today's world. It is a friendly voice activated assistant offered by Apple.[9] She helps to solve our problems like find directions, make voice calls, send messages, use definitely win over the rest. Data can create a calendar etc. Machine-Learning technology issued by Siri to understand the natural language. It is one of the most significant example of machine learning abilities of gadgets.
- Tesla: Artificial Intelligence not only contributes towards smart phones but also contributing towards automobiles. Tesla is one of the best example automobile artificial intelligence till now. This car has a self -driving capability, predictive capability and absolute technologicalinnovation. This car is updating day by day.[6]
- Cogito: The co-founders of Cogito are Dr. Sandy and Joshua. It is the behavioral version to enhance the intelligence of customer support representatives. It is the combination of machine learning and behavioral science to improve the collaboration of customer for phone professionals. It is applied on voice calls daily. In this, the human voice is analyzed by artificial intelligence solution and it provides the real time guidance.
- Netflix: It is the widely used content in today's scenario. It is very popular among the youth of world. It uses predictive technology that offers recommendations based upon the choices, reactions of the user. It examines from the records and recommends the movies which are based on your previous liking and choices. The drawback is that the small movie gets unnoticed whereas big movies grow on a large extent. But it is improving continuously.
- Pandora: It is he highlydemanded and popularamong these days. It is known as the DNA of music. There is a team of experts which analyses the song which depends upon 400 music characteristics. It also recommendsthe unnoticed songs without people's liking.[10]
- NEST (Google): It is the most popular and widely used artificial intelligence which is acquired by Google in 2014 for \$3.2 billion. The Nest LearningThermostat saves energy based on your behavior by using behavioral programs itself. Also, it mechanically put off to save lots of the energy if no one is reception. it's a mixture of AI and Bluetooth low-energy.[4]
- Boxever: It is a company that relies on machine learning. It can please customers to experience the micro-moments or experiences.
- Flying Drones: The flying drones uses Wi-Fi whichhelps to control them and use them for variouspurposes.They can translate the environment into a 3D model through sensors and video cameras.

- It was launched by Amazon. It continuously adding new features and getting smarter day by day. It uses the alexa voice service.

Review

Human interactions, computer language and artificial intelligence are depending on each other in today's scenario. It helps to reduce the man work, time consumption, hard work etc. On the other hand it increases unemployment. From the past few years, there is a big increase and improvement in technology.[3] We can do almost everything with the help of technology. Almost every work of humans can be done by machines. Artificial intelligence has become the very important part of the life of human in today's world. Now we are totally depend on artificial intelligence. Some of the scientists have concluded that machines can also do programming in future. But it is under process now. Artificial intelligence is increasing to a great extent.



Fig 4: Robot handshake

Conclusion

In this paper, we have described the dependency of human on computers through artificial intelligence. Through various examples, we have shown the use of Artificial intelligence and their importance in human life. Moreover, we have described the importance of Artificial intelligence in various phases of life and its consequences also. It is bad as well as good in various ways. It has become an irreplaceable part of human life. Through this paper, we conclude that it is increasing day by day and improving to a great extent and becoming a very important part of human life.

References

1. Maloof, Mark. "Artificial Intelligence: An Introduction, p. 37" (PDF). georgetown.edu.
2. "Can neural network computers learn from experience, and if so, could they ever become what we would call 'smart'?". Scientific American. 2018. Retrieved 24 March 2018.
3. AI becomes hugely successful in the early 21st century. Clark 2015
4. "Google and Nest reunite in push to add AI to every gadget", by Richard Nieva February 7, 2018
5. Luger, George; Stubblefield, William (2004). Artificial Intelligence: Structures and Strategies for Complex Problem Solving.
6. "How Tesla is Using Artificial Intelligence and Big Data". By Srikanth September 18, 2019 in Tech news.
7. Christine Rzepka and Benedikt Berger, "User Interaction with AI-enabled Systems: A Systematic Review of IS Research", Thirty Ninth International Conference on Information Systems, San Francisco, PP-1-18, 2018.

8. Retrieved from “Becoming Human: Artificial Intelligence Magazine” on Mar 14, 2019.
9. Mickle, Tripp (June 7, 2017). "I'm Not Sure I Understand'—How Apple's Siri Lost Her Mojo". The Wall Street Journal. Dow Jones & Company. Retrieved June 10, 2017.
10. “How Pandora Uses AI To Power Music Discovery” by rich ord on january 1, 2019.